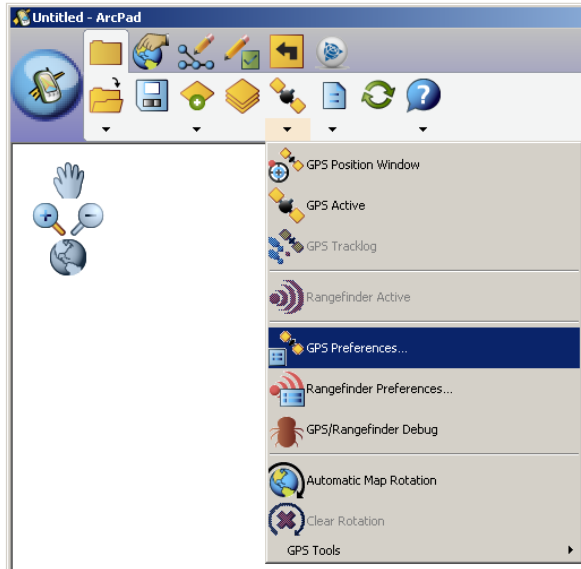


Conceptual Steps in ArcPad:

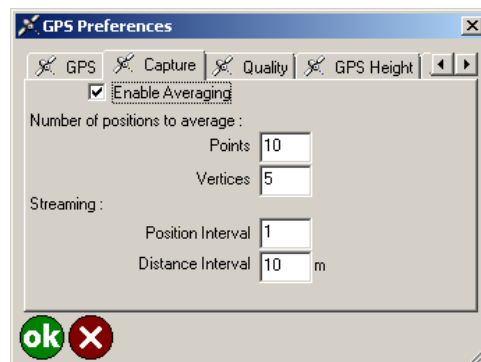
- Create Benchmark Shapefile
 - PointZ
 - 3 Attributes
 - Name - text
 - AverageTime – numeric
 - Date - date
 - Create Quick Form
 - No Picture page
 - Set default / list values for Name and AverageTime
 - All Fields Required
- Turn on GPS
 - GPSCorrect -> ensure ***.ssf logging
- Set GPS Preferences
 - Capture
 - Enable Averaging
 - Number of Positions to Average – Points: 10, 50, 100 seconds
 - GPS Height
- Collect Data – 9 points total: 3 Averaging schemes at 3 Benchmarks
 - 3 Benchmarks:
 - Fire Hydrant in front of NR building
 - Sundial in between Siemens Hall and the Van Duzer Theater
 - Homeplate on the baseball diamond
 - 3 Averaging schemes
 - 10 seconds
 - 50 seconds
 - 100 seconds

GPS Preferences

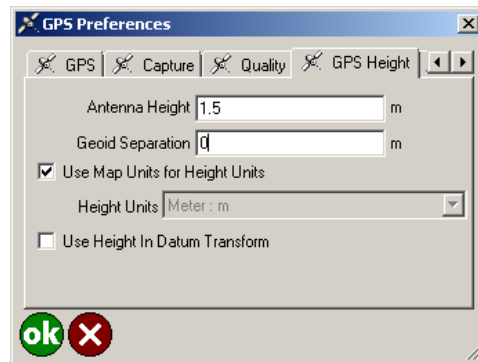
Two of the most important tabs are the Capture and GPS Height tab.

- Capture tab: determines if and how many positions you will be averaging to create point or vertice. To enable averaging, check the check box. This applies to point, line and polygon features.

You will be changing the number of points to average through this dialog in between each point.

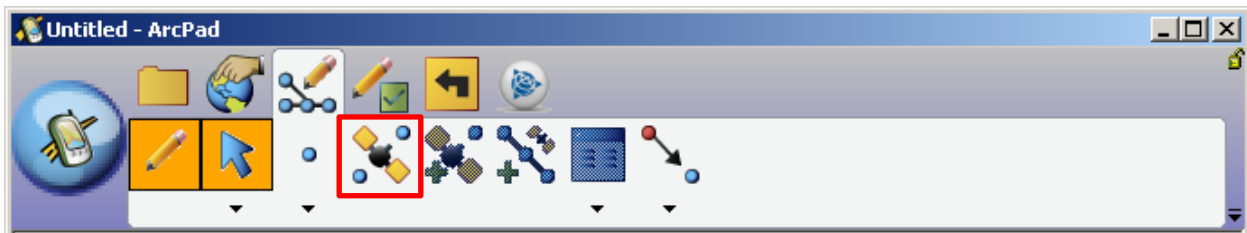


- GPS Height tab: specifies how high off the ground your GPS unit is.



Collecting Data

Point Features -> use the 'Capture Point' icon.



Capture Point icon in red

Fill out appropriate attributes in dialog boxes. Wait until averaging is achieved (if applicable) and click 'OK' in the lower left hand corner to commit.